

Roller banners



Saving the day

Climate change, energy costs and health care...

Climate change = the biggest global health threat of the 21st Century

direct health effects from climate change include:

- skin cancer & cataracts
- respiratory conditions
- food poisoning
- heat wave

NHS CARBON FOOTPRINT

21 million tonnes CO₂e

1/4 of all England's public sector emissions

over 3% of England's total emissions

REDUCTION TARGETS

10% reduction by 2015

54% = big short fall

So we need to do more...

Our targets and progress

How we use energy and reduction targets

Our energy use: 1.6 TWh, 24 kWh per patient, 13 kWh per day, 2 kWh per patient, 1 kWh per patient

Our target: 15% reduction, £1.7m saved

Our energy saving achievements: 12% saved

Energy use in a typical NHS trust:

- 50% Electricity
- 40% Gas
- 6% Water
- 4% Other

this energy use costs £2-£4 million per year

Energy use in a typical hospital:

- 50% Heating
- 10% Hot water
- 10% Fans
- 10% Lighting
- 10% Cooling
- 3% Staff travel
- 3% Refrigeration
- 1% Other

How much can you save?

Try 10p a day

Together staff can help save a lot of energy in a typical general hospital

£60,000 bought for saving 1/3 tonne of CO₂ per day

I can change...

card	card
card	card
card	card
card	card

I can't change...

card	
card	card
card	

Look out for:

- 1 Locally controlled equipment: Lights, printer, computer, diagnostic equipment, catering and TV
- 2 Areas that are unoccupied for long periods: Offices, consulting rooms, water rooms, single patient rooms, shower rooms, toilet and storage areas
- 3 Faults or odd looking things: Chipping taps, external lighting during the day, doors too hot, odd air draughts

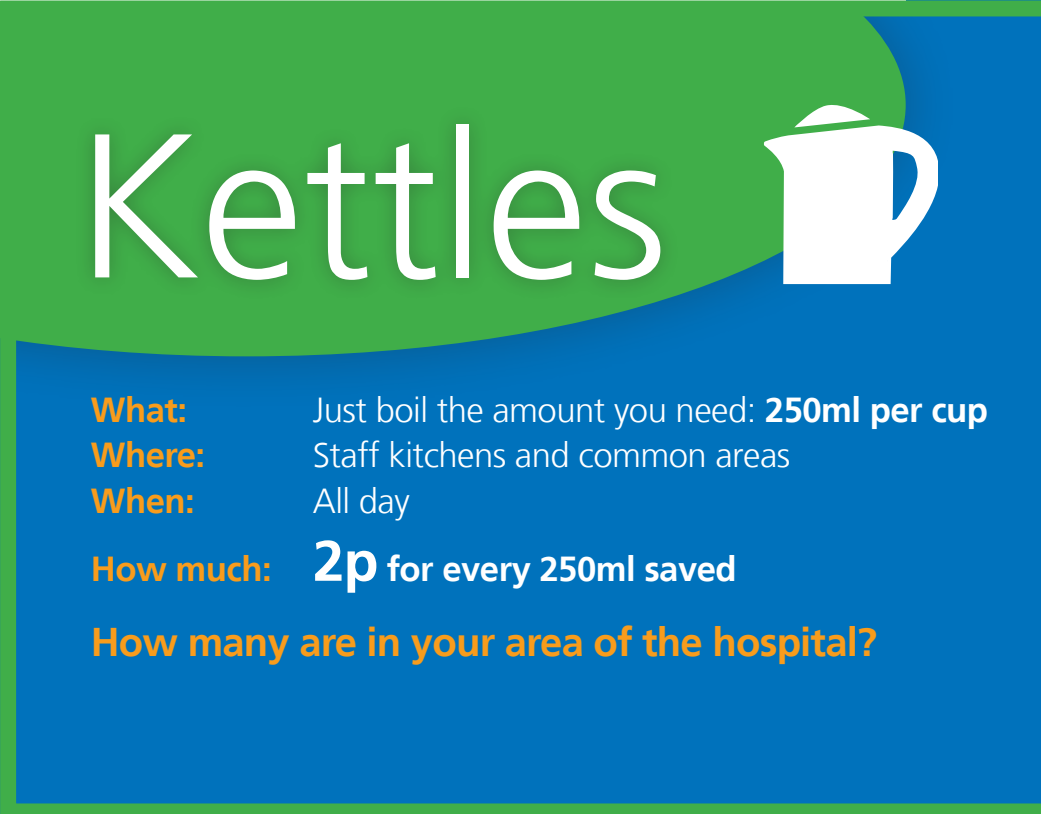
What's a unit of electricity?

10p CO₂ weighing just under a pint of milk

1 kWh


+1gs=

Stick-on card example



The card features a green top section with the word 'Kettles' in white and a white kettle icon. The bottom section is blue with white and orange text providing energy-saving tips.

Kettles



What: Just boil the amount you need: **250ml per cup**

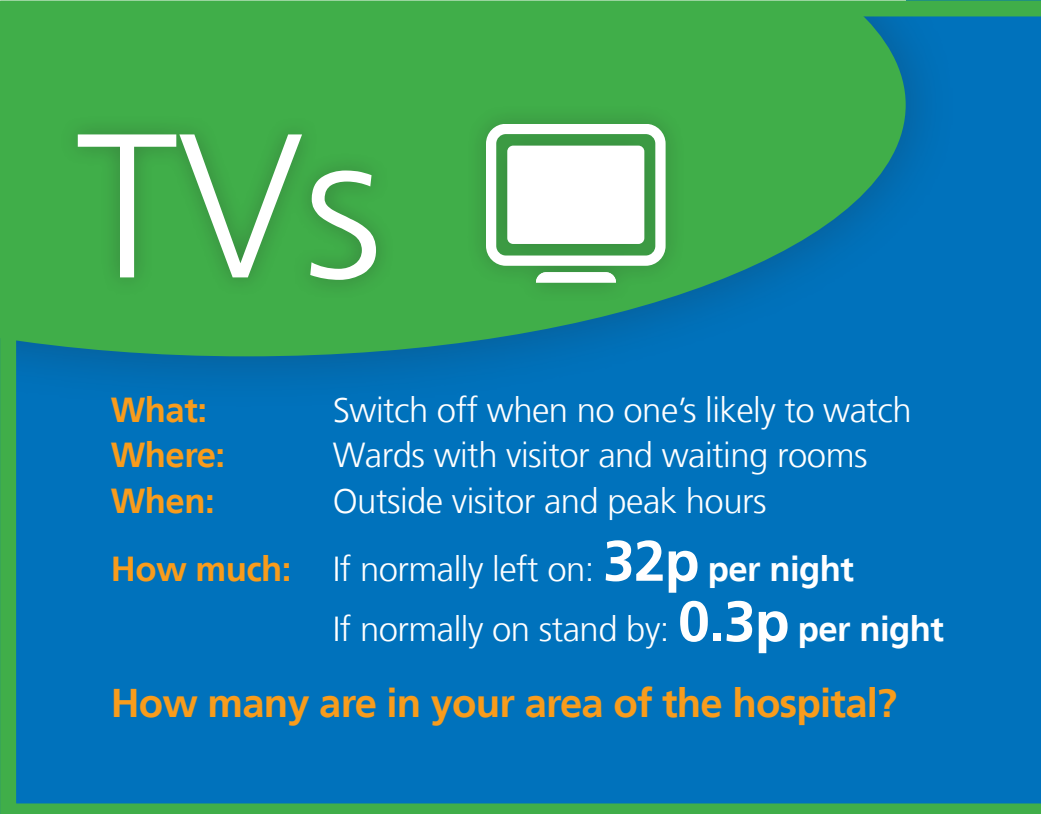
Where: Staff kitchens and common areas

When: All day


How much: **2p** for every 250ml saved

How many are in your area of the hospital?

Stick-on card example



The card features a green top section with the text 'TVs' and a white TV icon. The bottom section is blue and contains energy-saving tips and cost information for TVs.

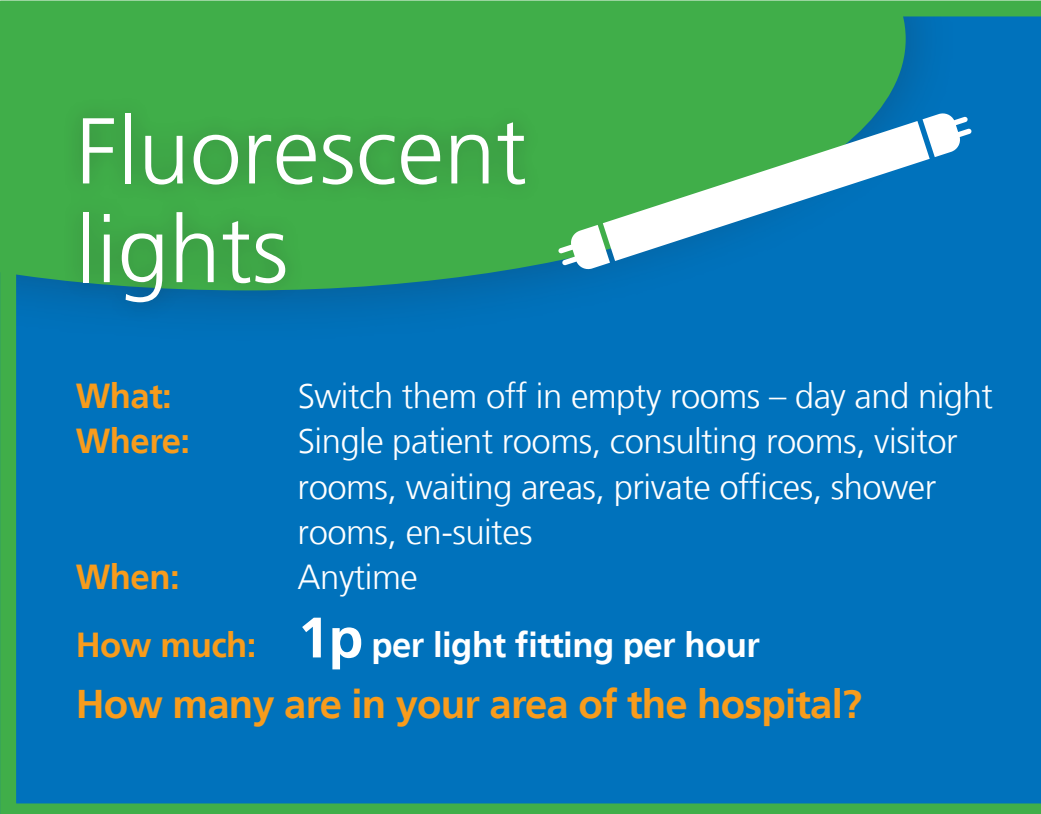
TVs 

What: Switch off when no one's likely to watch
Where: Wards with visitor and waiting rooms
When: Outside visitor and peak hours

How much: If normally left on: **32p per night**
If normally on stand by: **0.3p per night**

How many are in your area of the hospital?

Stick-on card example



The card features a green top section with the title 'Fluorescent lights' in white. Below the title is a white fluorescent light tube. The bottom section is blue with white and orange text providing details on what, where, when, and how much to save.

Fluorescent lights

What: Switch them off in empty rooms – day and night

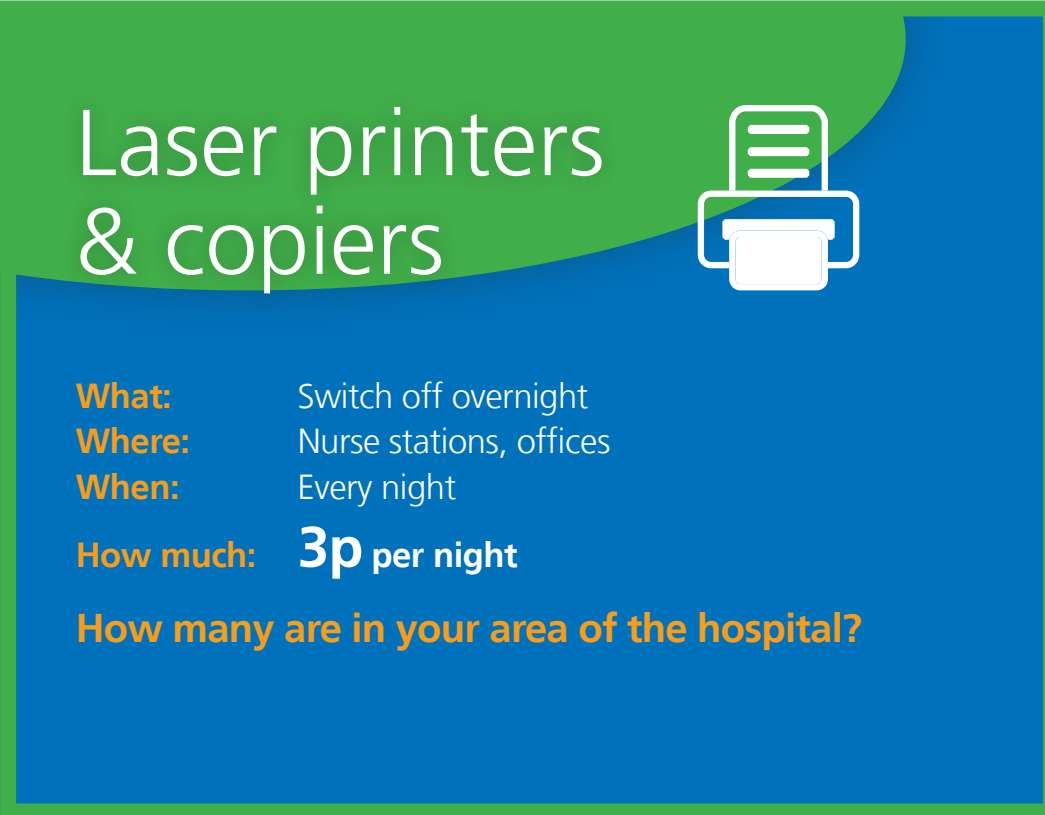
Where: Single patient rooms, consulting rooms, visitor rooms, waiting areas, private offices, shower rooms, en-suites

When: Anytime

How much: **1p** per light fitting per hour


How many are in your area of the hospital?

Stick-on card example



The card features a green top section and a blue bottom section. The title 'Laser printers & copiers' is in white on the green background. A white icon of a printer is on the right. The text below is in orange and white on the blue background.

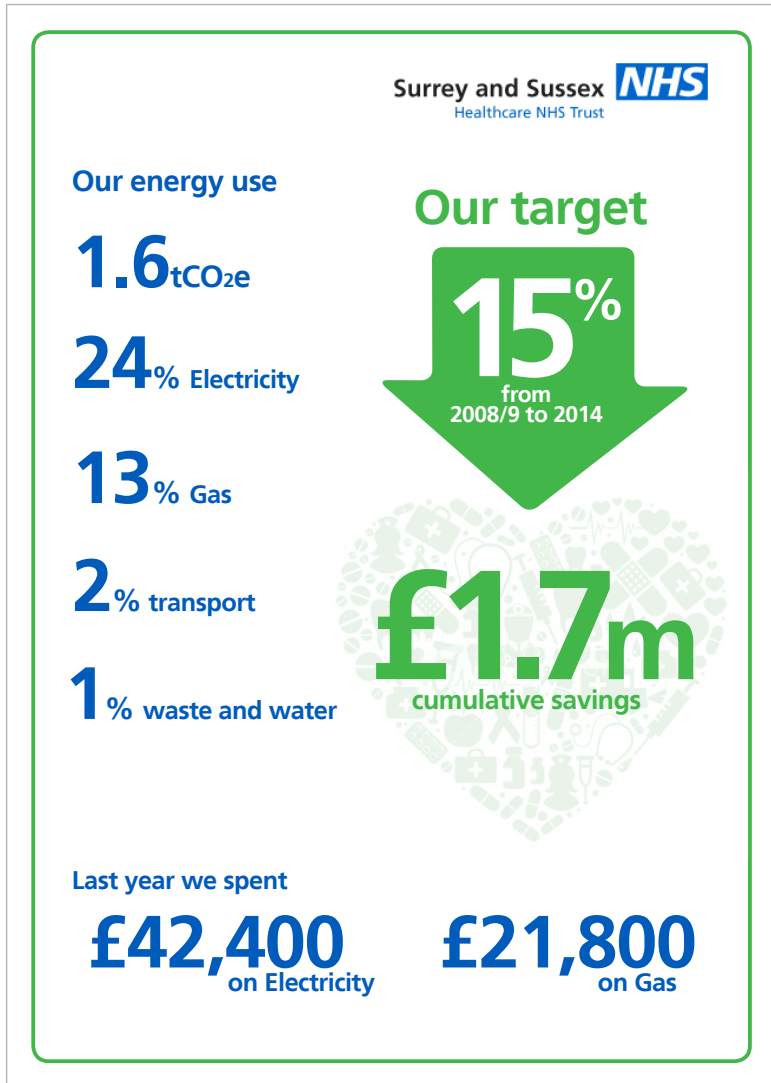
Laser printers & copiers



What: Switch off overnight
Where: Nurse stations, offices
When: Every night
How much: **3p** per night
How many are in your area of the hospital?

Reports

How we use energy and our reduction target



Our energy saving achievements

